



**PLOD: Year 1
asked...**

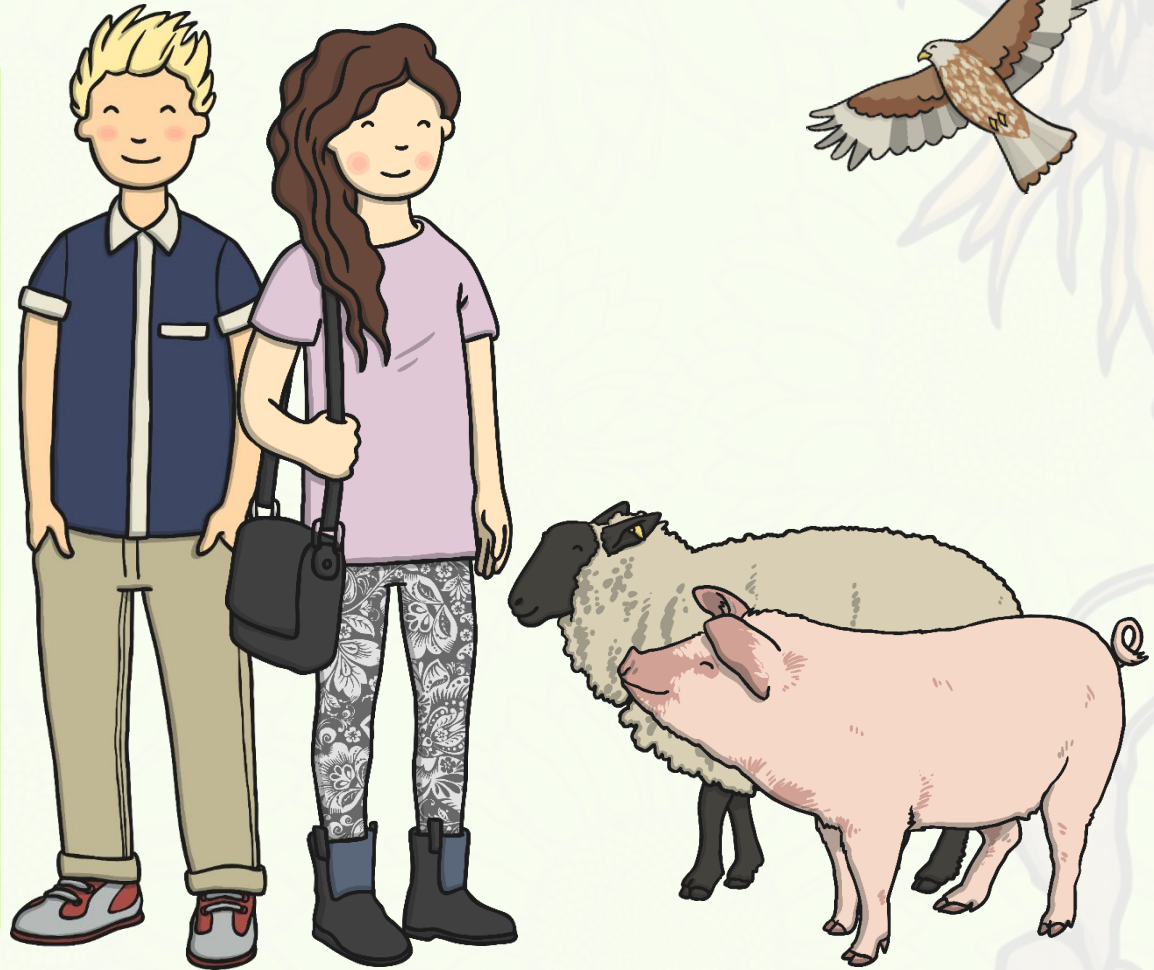
**Flowers that die, do
their seeds replant?**

Plants Are Living Things

Plants and trees are alive like humans and other animals.

How can we tell that plants are living things?

What do plants need to stay alive?



Life Processes

Plants can **move** and **grow**, and they **sense** changes in their environment.



A sunflower moves to turn its face towards the sun.



Roots grow in all directions to find soil and water.

How is this similar to what humans and other animals do?

Life Processes



Plants can **reproduce** to make new plants.



Some plants make seeds that grow into new plants.

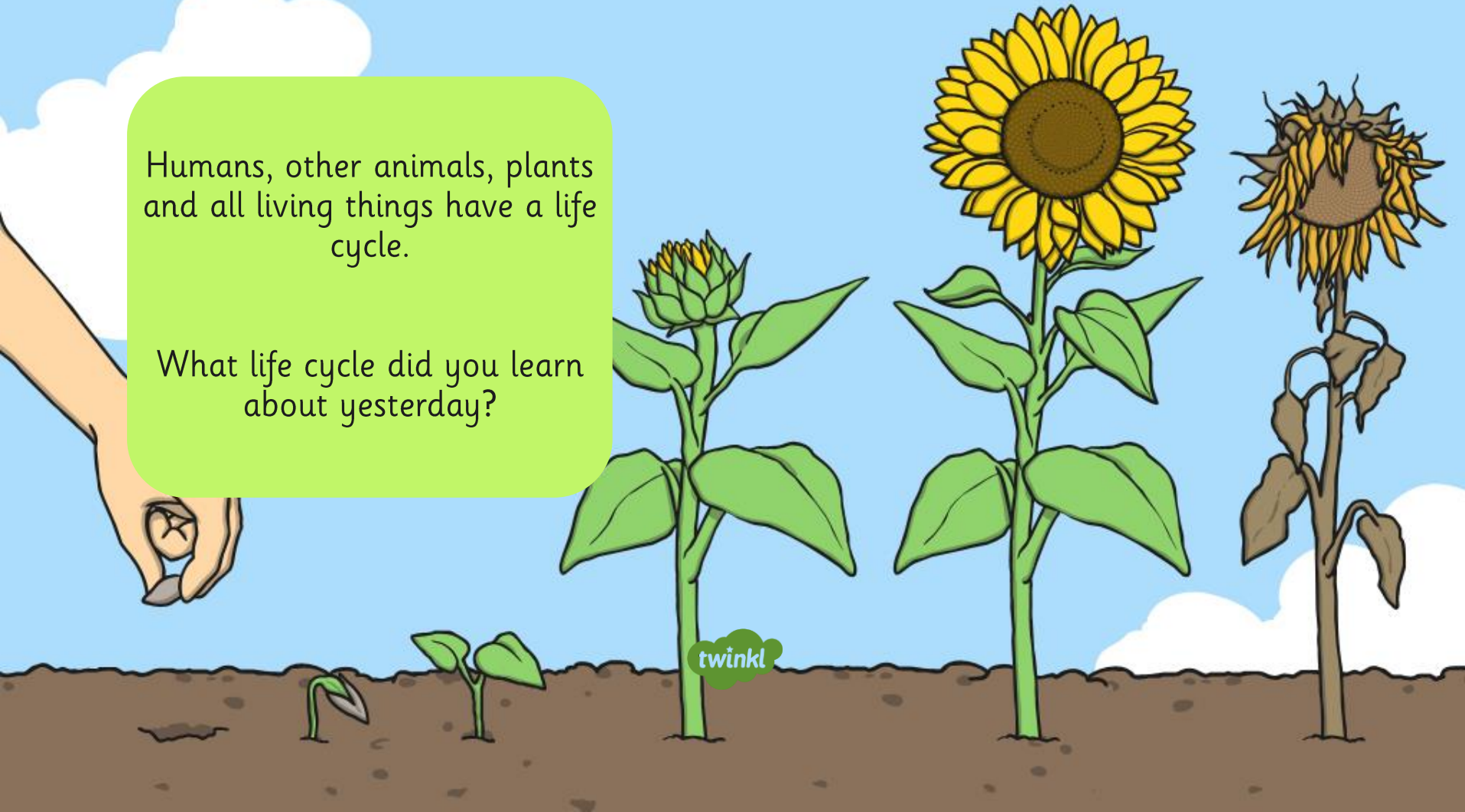


Some plants make baby plants.

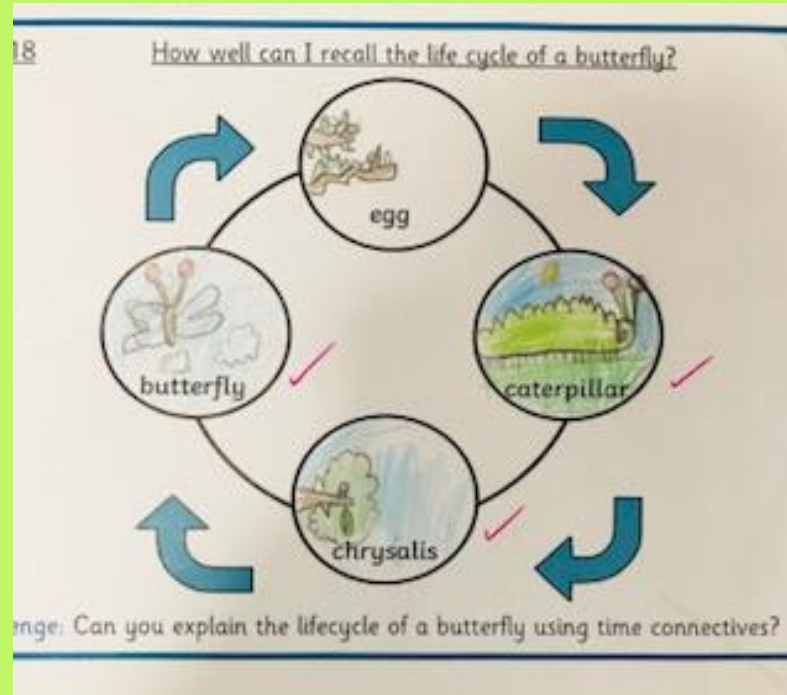
Life Cycles

Humans, other animals, plants and all living things have a life cycle.

What life cycle did you learn about yesterday?



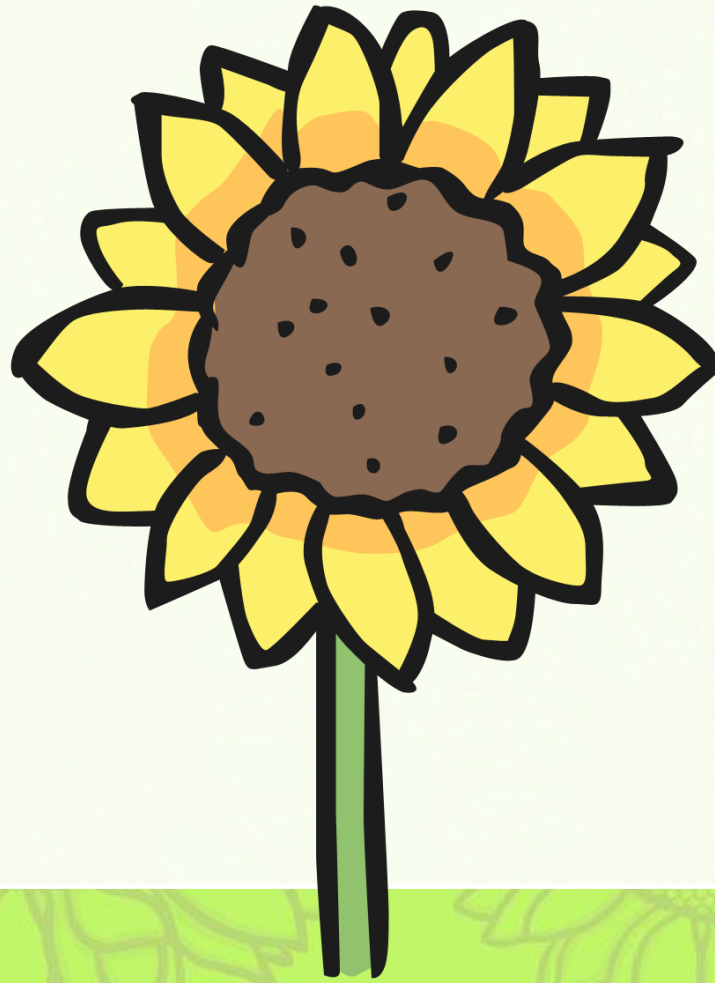
Life Cycles



**Year 1 work from a previous year;
just like yours!**

Sunflower Life

Cycle



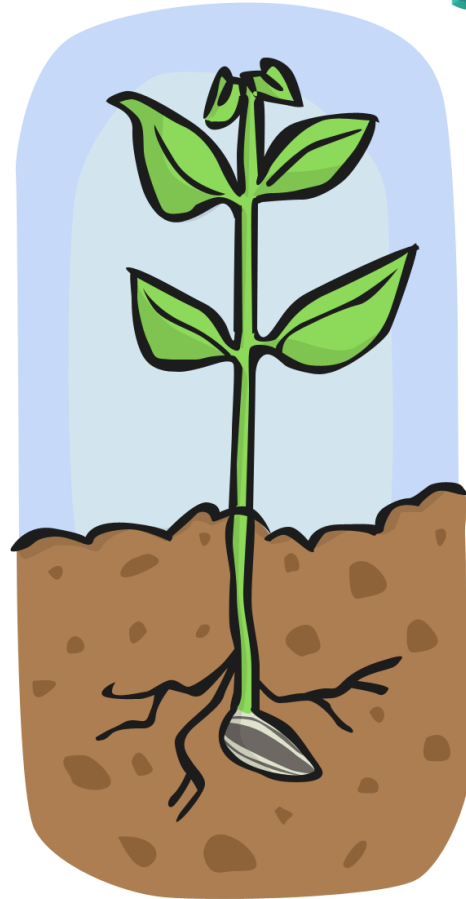
The seed germinates about 1-2 weeks after planting.

Germination



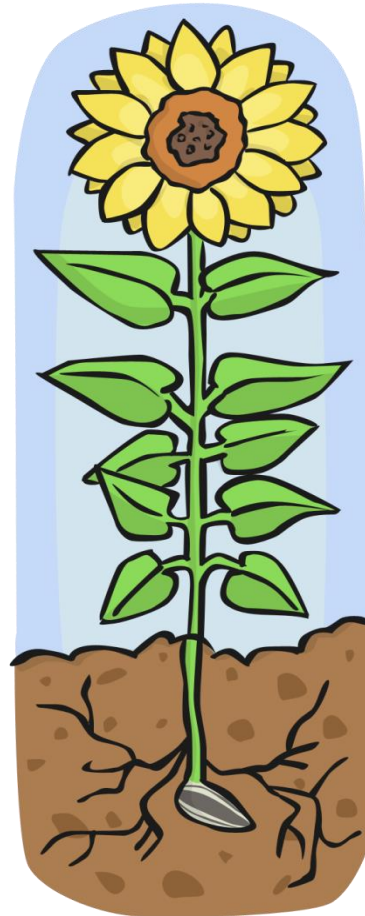
A shoot starts to grow. A few leaves will appear.
The plant grows and a bud forms.

Seedling



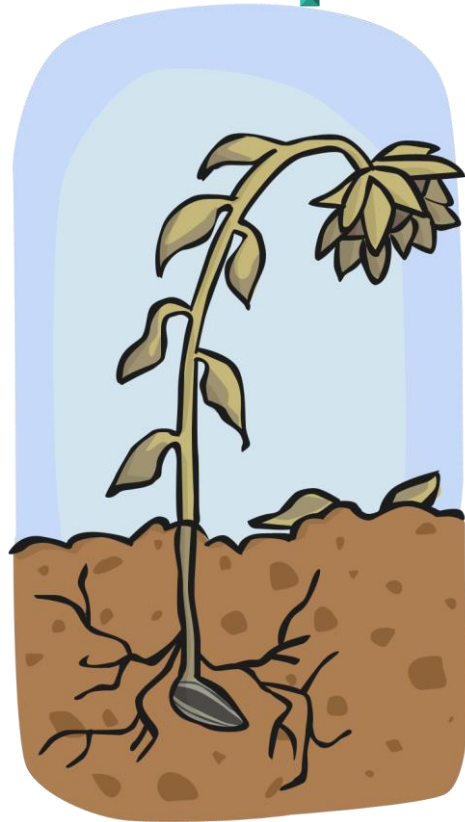
The head of the Sunflower opens!
It will take around 90 days for a Sunflower to be fully grown.

Flowering

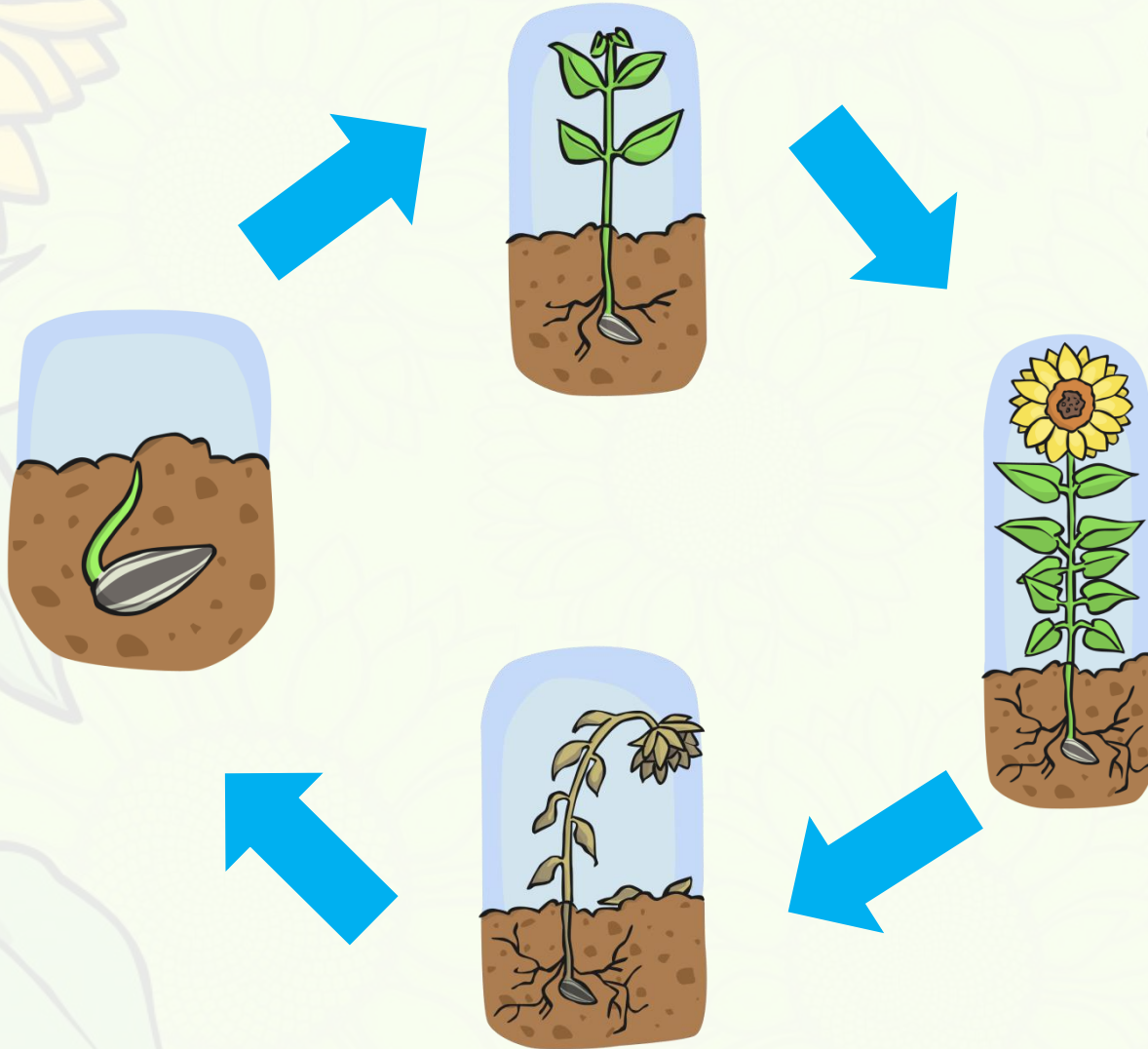


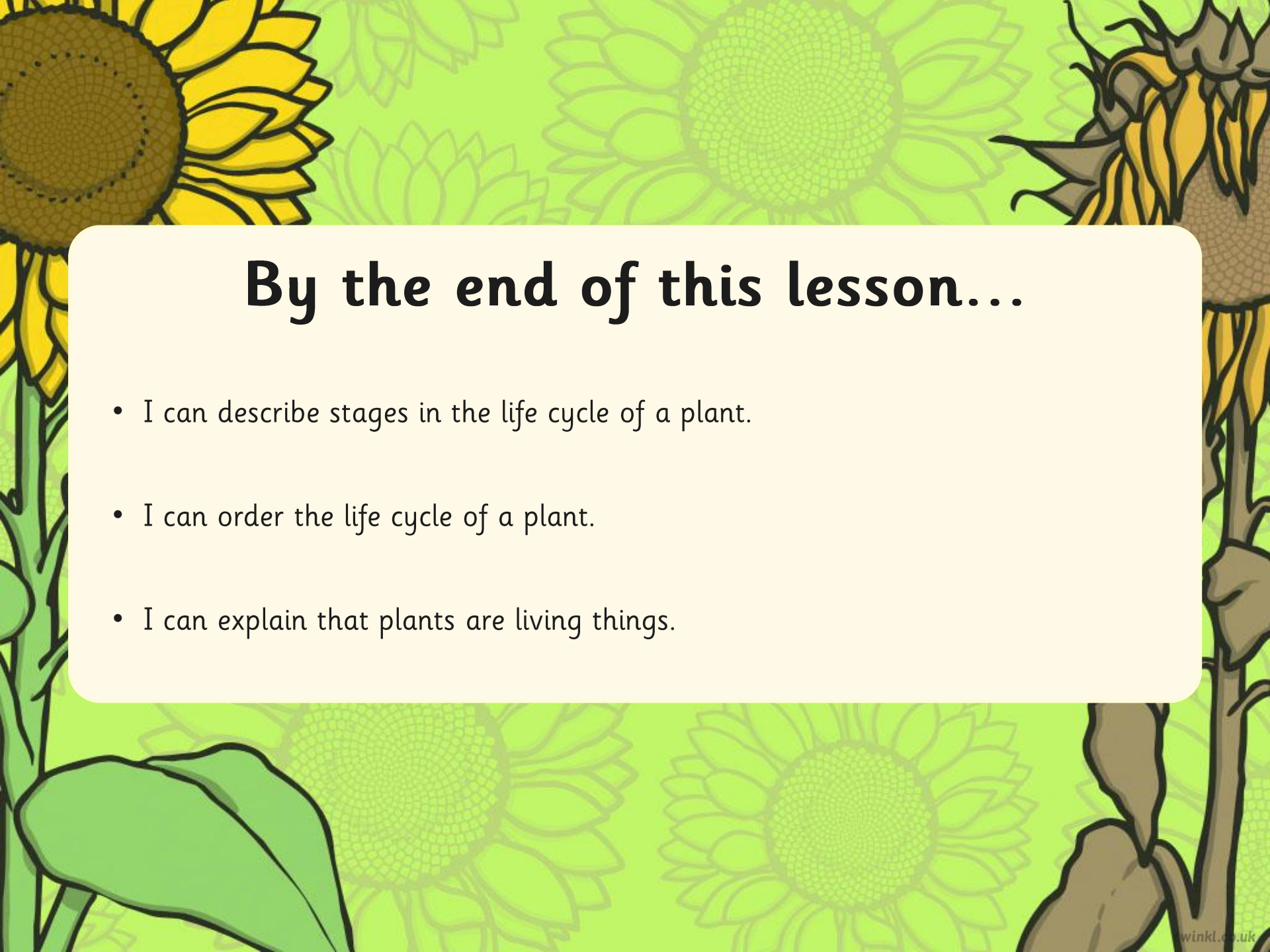
The Sunflower will eventually die and the seeds from its head will fall on to the ground, to grow in to new flowers.

Seed dispersion



Sunflower Life Cycle



The background of the slide is a vibrant green with a repeating pattern of sunflowers. Some sunflowers are in full bloom with bright yellow petals and dark brown centers, while others are in various stages of growth, including buds and seed heads. The style is a simple, bold line drawing with flat colors.

By the end of this lesson...

- I can describe stages in the life cycle of a plant.
- I can order the life cycle of a plant.
- I can explain that plants are living things.